

-->

# 2025 Technology Updates (Summer / Fall) - Faculty and Staff

Last Modified on 08/21/2025 9:46 am EDT

Summer 2025 saw a number of technology updates; here are key updates you should know about. As needed, we'll communicate throughout the semester about any additions to this page, but keep your eye on it as we continue to improve the tech experience.

Faculty who taught over the summer may notice a long login time when they log in for the first time after the start of classes.

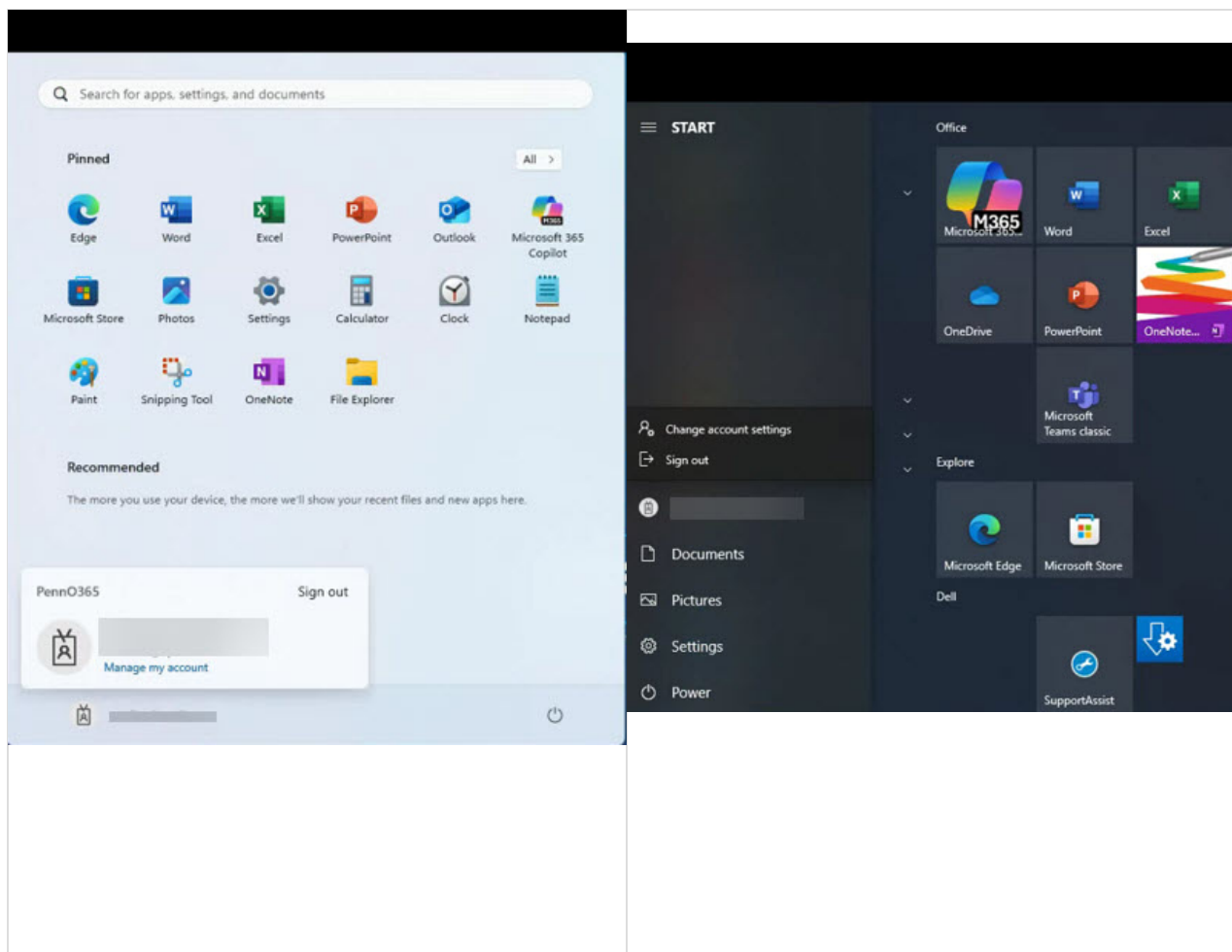
## Table of Contents:

- [Operating System Updates: Windows10 > Windows11](#)
- [Transition to PennKey Logins for Windows PCs](#)
- [Research & Analytics News](#)
- [Courseware](#)
- [Resources for Teaching Teams](#)
  - [Canvas Basics](#)
  - [IDEA Courseware Fall Webinar Series](#)
  - [Courseware Teams & Faculty Office Hours](#)
- [Network Shares](#)
- [Questions?](#)

## Operating System Updates: Windows10 > Windows11

The Windows computers in the classrooms and centrally managed conference rooms have been updated to Windows 11. Key changes include:

- **New position of login/logout button.** Signout works the same way (click name and "signout"), but positioning and appearance are different.
- **Repositioned Start Menu and Task Bar.** The Start Menu and Taskbar have moved to the center.
- **Refreshed Start Menu Appearance.** Tiles on the Start Menu look different.



- Since support for Windows 10 is ending, any remaining systems on Windows 10 will be retired during Fall 2025.

## Transition to PennKey Logins for Windows PCs

[Top](#)

The School is transitioning all Windows PC login credentials to PennKey, aligning with University-wide practice. These transitions will occur in phases during the summer and fall of 2025.

## Research & Analytics News

[Top](#)

The **Research IT team** can help with your research needs:

- **Data purchasing help:** We can help you **purchase new data**, review data use agreements, and **onboard your data**. **Reach out** with any questions!
- **Office Hours:** Office Hours will continue in person, in your department. Check **the schedule** or send us **your research questions**.
- **WRDS CRSP Users:** The structure of the CRSP database on WRDS has changed. The old structure will be updated with 2024 end-of-year data, but going forward only the new structure will contain current data. Please see our **Changes to CRSP Data** article for details, an FAQ, and sample code for accessing the new structure.

- **Research Programming Resources:** We also offer enhanced research programming, statistical programming, and data engineering resources, using a wide variety of tools and techniques. [Reach out to us](#) to find out how we can help!
- **Generative AI tools and techniques:** We provide expertise in integrating AI solutions into research projects, and offer guidance on best practices for using generative AI effectively. Whether you need help with data preprocessing, testing models for biases and fairness, or leveraging AI systems, the team is here to support your research endeavors.

Have questions for the team? Reach out to [Research IT](#) to get the conversation started.

## Courseware

[Top](#)

**Files tab redesign:** The Files tab of Canvas course sites was redesigned in July 2025. Please see our [All About Files and Folders](#) article for more information.

**Upcoming Pilots:** In the 2025-2026 academic year, the Courseware Team expects to pilot two tools that integrate with Canvas.

- **Wooclap**, a polling tool being evaluated as a possible Poll Everywhere replacement
- **Peerceptiv**, a peer feedback and review tool being evaluated as a replacement for Feedback Fruits.

To learn more about either pilot, please [reach out to the Courseware Team](#).

**Poll Everywhere Reminder:** Classroom PCs no longer have the add-on installed. Use a [web browser to access Poll Everywhere](#) on classroom PCs to manage and run polls.

## Resources for Teaching Teams

[Top](#)

### Canvas Basics

The Courseware Instructional Design team is offering five virtual Canvas Basics sessions this Fall 2025. Each 30-minute session focuses on essential Canvas tools. If you are interested in attending or would like to watch a session recording, please [register for a session](#) at least one business day before the session is scheduled.

- **Communicating with Students – Aug 22, 10–10:30 AM :** Learn how to send announcements, use email lists, and manage notification settings.
- **Managing Assignments – Aug 27, 11:30 AM–12 PM :** Create/edit assignments, set due dates, and troubleshoot common issues.
- **Groups & Group Assignments – Aug 28, 12–12:30 PM :** Set up groups, assign group work, and avoid common pitfalls.
- **Grading Assignments – Aug 29, 1:30–2 PM :** Use SpeedGrader, navigate the gradebook, and handle special cases like anonymous grading.
- **Exams & Quizzes – Sept 10, 12–12:30 PM :** Explore quiz formats, question types, and how to manage accommodation.

\*This training is primarily intended for new TAs, but we welcome faculty and staff, too!

## IDEA Courseware Fall Webinar Series

In addition to Courseware's offerings, more extensive fall programming includes a [Faculty Webinar Series](#) (via Zoom):

- **Course Materials @ Penn Libraries with Leganto** (on-demand, no registration required) : demo of the Course Materials @ Penn Libraries system, hosted by Mia Wells from the Lippincott Library of the Wharton School.
- **All About aPlus+ Attendance Friday, AUG 29 @ 12-1pm**: The Wharton School now uses aPlus+ Attendance to track attendance and check-ins across courses. This training is both an introduction and a refresher, and includes helpful tips & tricks.
- **Presenting Wooclap, a Peek into Polling & More**: An interactive polling tool currently in pilot. Learn about the many ways Wooclap can enhance classroom engagement.
- **Discouraging Cheat Culture in the GenAI Era & Understanding the Penn Academic Integrity Disciplinary Process Friday, SEP 26 @ 12-1pm**: Highlights emerging trends in academic misconduct and offers proactive strategies to discourage a cheating culture through intentional planning & classroom practices.
- **Exploring Wharton's Lecture-Recall Tool: Powered by ChatGPT Edu: Friday, OCT 24 @ 12-1pm**: a behind-the-scenes look at Wharton's AI-powered Lecture Recall GPT, designed to transform how students engage with course content.
- **Improve Peer Assessment with Peerceptiv Friday, NOV 07 @ 12-1pm**: Learn about Peerceptiv, a new option for peer and self-assessment, live presentation feedback, and group member evaluation.
- **Transitioning – Why New Quizzes? Why Now? Friday, DEC 05 @ 12-1pm**: Learn how to effectively transition from the legacy Canvas quiz tool to New Quizzes, a more modern and feature-rich quiz engine.

For live events, recordings will be available soon after the event concludes.

## Courseware Teams & Faculty Office Hours

Lively mini sessions hosted by the Courseware Team - learn about tips, ask quick questions, or get advice on best practices. (Recording of the mini-webinar will be available soon after the event concludes.)

- **Friday 10/03 Courseware Office Hour @ 12-1pm**
- **Friday 11/21 Courseware Office Hour @ 12-1pm**

[Top](#)

## Network Shares

A reminder that network shares are not automatically available when you first log into the classroom computer. We recommend storing your presentations and other files in a cloud service (OneDrive, Dropbox, PennBox, Google Drive) or a USB drive that you bring to class. Once you log into the classroom computer, you'll see shortcuts to these cloud services on the desktop, so you can easily launch the right one(s) for you.

[Top](#)

## Questions?

If you have any questions or want to discuss your technology needs for the fall, please reach out to your [Wharton Computing Team](#)

---